



1. COMPUTER FUNDAMENTALS



WORKSHEET 1.1

Name: _____

Date: _____

A. Multiple Choice Questions

1. Which of the following is a peripheral device?

(a) Printer

(b) Hard disk

(c) RAM

(d) Processor

2. Which of the following is an input device?

(a) Printer

(b) Keyboard

(c) Speaker

(d) Monitor

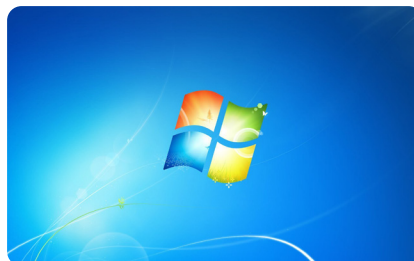
3. Which of the following is system software?

(a) Tux Paint

(b) MS Paint

(c) Flash

(d) Windows





B. Fill in the blanks.

data

keyboard

sound

1. A computer stores _____ in Hard Disk.
2. _____ is the device for typing letters.
3. _____ is the output produced by speakers.



C. Write T for True and F for False.

1. Processing involves accepting data from user.
2. Data is stored in a computer.
3. RAM is a peripheral device.

☐
☐
☐

D. Match the Columns.

Column A

- (1) Scanner
- (2) Printer
- (3) Microphone

Column B

- (a) Prints documents
- (b) Records sound
- (c) Takes photo of document

E. Answer these questions.

1. How will you define computer?
2. What is the full form of IPO cycle?
3. What are the different categories of hardware?



Grade: _____

Teacher's signature: _____



1. COMPUTER FUNDAMENTALS

Answer Keys

Worksheet 1.1

- A. (1) Printer (2) Keyboard (3) Windows
- B. (1) data (2) keyboard (3) sound
- C. (1) F (2) T (3) F
- D. (1) c (2) a (3) b
- E. 1. A device that takes input, processes data and gives output is called computer.
2. IPO stands for Input-Processing and Output.
3. Following are different categories of hardware:
- Input devices
 - Processing devices
 - Output devices
 - Storage devices



1. COMPUTER FUNDAMENTALS

WORKSHEET 1.2

Name: _____

Date: _____

A. Multiple Choice Questions

1. Which of the following is an output device?

(a) Mouse

(b) Keyboard

(c) Scanner

(d) Speaker



2. Which of the following is hardware?

(a) MS Paint

(b) RAM

(c) Windows

(d) MS Word

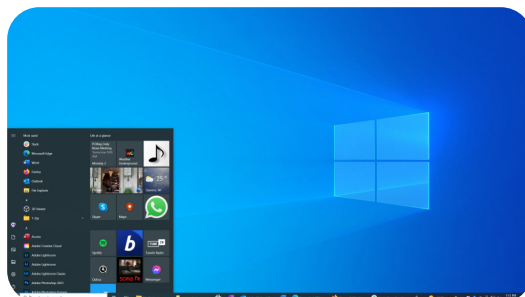
3. Which part of the CPU does all the calculations?

(a) Arithmetic Logic Unit

(b) Control Unit

(c) Memory Unit

(d) MS Word





B. Fill in the blanks.

Hard disk

utility

RAM

1. MS Paint is an example of _____ software.
2. Random Access Memory is the full form of _____.
3. A _____ is the main storage device in the computer.



C. Write T for True and F for False.

1. Scanner is a peripheral device.
2. Software is available in physical form.
3. System software is a built-in software that controls the overall working of a computer.

D. Match the Columns.

Column A

- (1) Speaker
- (2) Mouse
- (3) Monitor



Column B

- (a) Produces sound
- (b) Pointer device
- (c) Displays information

E. Answer these questions.

1. What is the difference between hardware and software?
2. What do you understand by software?
3. What do you understand by the I-P-O cycle for a computer?

Grade: _____

Teacher's signature: _____



1. COMPUTER FUNDAMENTALS

Answer Keys

Worksheet 1.2

- A. (1) Speaker (2) RAM (3) Arithmetic Logic Unit
- B. (1) utility (2) RAM (3) Hard disk
- C. (1) T (2) F (3) T
- D. (1) (a) (2) (b) (3) (e)
- E. 1. Physical components of a computer which can be seen or touched are called hardware. Non-physical components are called software. A computer program is called software.
2. Computer software is a set of instructions that tells the computer how to do a particular work.
3. The I-P-O cycle in a computer stands for Input, Process, and Output.
- Input – The computer takes information or commands from us.
(Example: Typing on a keyboard or clicking a mouse.)
 - Process – The computer thinks and works on the information.
(Example: Solving a sum or running a program.)
 - Output – The computer shows the result.
(Example: Displaying text on the screen or printing a paper.)
- This cycle helps the computer complete tasks quickly and correctly!



2. INTRODUCTION TO WINDOWS 10

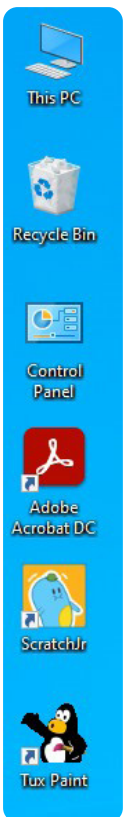
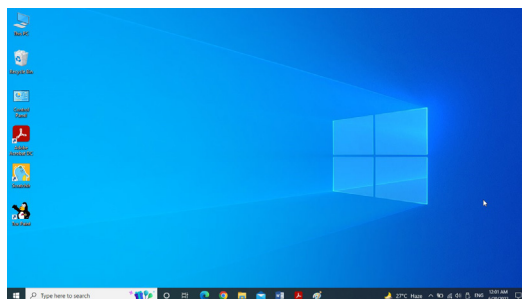
WORKSHEET 2.1

Name: _____

Date: _____

A. Multiple Choice Questions

- Which of the following is an operating system for mobile phones?
 - Windows
 - Linux
 - Android
 - Mac OS
- Which is the first screen of Windows operating system?
 - Windows
 - Desktop
 - First Screen
 - Iconic Screen
- Windows operating system is made by which company?
 - Microsoft
 - Apple
 - Adobe
 - Google





B. Fill in the blanks.

programs

interface

operating system

1. Operating system works as _____ between user and computer.
2. The _____ manages all the hardware and software of a computer.
3. You can manage multiple open _____ in Windows 10.

C. Write T for True and F for False.

1. Operating system is the least important component of a computer.
2. Clicking the Start button shows a menu.
3. You cannot search a program quickly in Windows 12.

☐☐☐

D. Match the Columns.

Column A

(1) 

(2) 

(3) 

(4) 

(5) 

Column B

(a) Folder

(b) Network

(c) Recycle bin

(d) Printer

(e) My PC

Grade: _____

Teacher's signature: _____



2. INTRODUCTION TO WINDOWS 10

Answer Keys

Worksheet 2.1

- | | | |
|------------------|----------------------|---------------|
| A. (1) Android | (2) Desktop | (3) Microsoft |
| B. (1) interface | (2) operating system | (3) programs |
| C. (1) F | (2) T | (3) F |
| D. (1) e | (2) c | (3) b |



2. INTRODUCTION TO WINDOWS 10

WORKSHEET 2.2

Name: _____

Date: _____

A. Multiple Choice Questions

1. Android OS is made by which company?

(a) Microsoft

(b) Apple

(c) Adobe

(d) Google



2. What is Cortana?

(a) Operating System

(b) Personal assistant

(c) Virtual assistant

(d) Utility software

3. Which of the following is not a feature of Windows 10?

(a) It supports multi-touch

(b) It has a graphical user interface

(c) There is not tool on the taskbar

(d) It has a new virtual assistant



Windows



Linux



macOS



B. Fill in the blanks.

Booting

bottom

mobile phone

1. Android is an operating system for _____.
2. Taskbar is situated at _____ of desktop.
3. The process of loading an operating system on the computer's memory is called _____.

C. Write T for True and F for False.

1. The logo of Windows shows a penguin.
2. Double click on an icon opens a program.
3. Each icon represents a specific program, document, folder or some other item.

☐
☐
☐

D. Answer these questions.

1. What do you understand by operating system?
2. Give two examples of operating system for mobile phones.
3. Write some important features of Windows operating system.
4. What is Task View?
5. How will you quickly search for a program in Windows?

Grade: _____

Teacher's signature: _____



2. INTRODUCTION TO WINDOWS 10

Answer Keys

Worksheet 2.2

- A. (1) Google
(2) Virtual assistant
(3) There is not tool on the taskbar
- B. (1) mobile phone (2) bottom (3) Booting
- C. (1) F (2) T (3) T
- D. 1. An operating system (OS) is the most important software without which a computer cannot run. It acts as interface between you and the computer. It manages all the Hardware and software.
2. Android and Apple iOS
3. Following are some important features of Windows operating system:
- We can view or store their files.
 - We are allowed to run the software.
 - We can play games as well as watch videos.
 - Window operating system can be connected to the internet.
4. The Task View feature of Windows 10 make it easy to manage multiple open programs. It lets us quickly switch between the open windows.
5. Locate the Search Box which is on right hand side of task bar on desktop. Type the name of program in Search Box, and press Enter. This will open the program.



3. MS WORD 2016

WORKSHEET 3.1

Name: _____

Date: _____

A. Multiple Choice Questions

- Cursor in MS Word looks like which of the following?
 - Small horizontal line
 - Small vertical line
 - Hand symbol
 - Small arrow
- Which of the following actions of mouse is used for selecting a text in Word document?
 - Left click
 - Drag
 - Right click
 - Click and drag
- Which of the following actions of mouse is used for selecting a word in Word document?
 - Double click
 - Left click
 - Right click
 - Drag





B. Fill in the blanks.

Quick Access

Clipboard

Wrap

1. Copy button is present in _____ group on Home tab.
2. Undo and Redo buttons are present on _____ Toolbar.
3. Word _____ automatically shifts cursor to next line when it reaches the end of a line.

C. Write T for True and F for False.


1. You cannot add pictures in a Word document.
2. You can easily make changes to a Word document.
3. Word gives the facility for checking spelling and grammar in a sentence.

☐
☐
☐


D. Match the Columns.

Icons

(1) 

(2) 

(3) 

(4) 

(5) 

Names

(a) Shapes

(b) Clipart

(c) Smart art

(d) Picture

(e) Table

Grade: _____

Teacher's signature: _____



3. MS WORD 2016

Answer Keys

Worksheet 3.1

- | | | | |
|----|-------------------------|--------------------|------------------|
| A. | (1) Small vertical line | (2) click and drag | (3) double click |
| B. | (1) Clipboard | (2) Quick Access | (3) Wrap |
| C. | (1) F | (2) T | (3) T |
| D. | (1) e | (2) d | (3) b |



3. MS WORD 2016

WORKSHEET 3.2

Name: _____

Date: _____

A. Multiple Choice Questions

1. What is the keyboard shortcut for selecting the whole document?

(a) Ctrl + A

(b) Ctrl + B

(c) Ctrl + O

(d) Ctrl + Z

2. Pressing which button deletes text to the left of cursor?

(a) Delete

(b) Backspace

(c) Space

(d) Ctrl + L

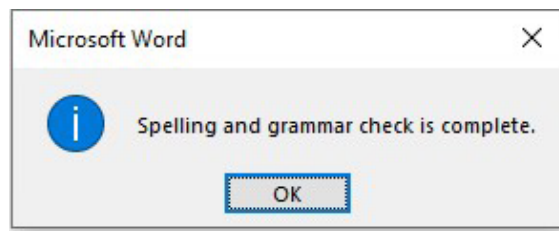
3. Which of the following indicates spelling errors in MS Word?

(a) Wavy blue underline

(b) Wavy green underline

(c) Wavy red underline

(d) Wavy yellow underline





B. Fill in the blanks.

Clipboard

Thesaurus

Review

1. Grammar button is present on _____ tab.
2. _____ can replace a word with synonym.
3. The Cut/Copy/Paste buttons are present in the _____ group on the Home tab.

C. Write T for True and F for False.

1. You cannot type poetry in Word but you can write letters in it.
2. MS Word is an online dictionary.
3. To select a sentence, double-click anywhere in the sentence.

☐
☐
☐

D. Match the Columns.

1. What do you understand by MS Word?
2. What are the uses of Undo and Redo function in MS Word?
3. What is the use of Thesaurus?
4. If you have typed the name of a town in Word document and spelling check is showing it as incorrect, what will you do?
5. While typing an essay, you deleted a paragraph by mistake. What will be your next step?

Grade: _____

Teacher's signature: _____



3. MS WORD 2016

Answer Keys

Worksheet 3.2

- A. (1) Ctrl + A (2) Backspace (3) Wavy red underline
- B. (1) Review (2) Thesaurus (3) Clipboard
- C. (1) F (2) F (3) F
- D. 1. MS Word 2016 is word processing software that lets you create a variety of documents such as letters, reports, notices, etc.
2. The Undo button is used to reverse the last action performed, while the Redo button reapplies the last action reversed by the Undo.
3. Thesaurus helps in replacing a word with a synonym. It is used when the user wants a richer language than he has typed.
4. I will click on Ignore if the word is used only once in the document. I will click on Ignore All if the word is used multiple times in the document.
5. I will move the cursor to Quick Access Toolbar, and then I will click on Undo button. This will recover the deleted paragraph.



4. FORMATTING TEXT IN WORD 2016

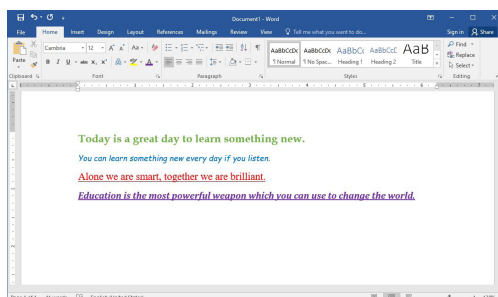
WORKSHEET 4.1

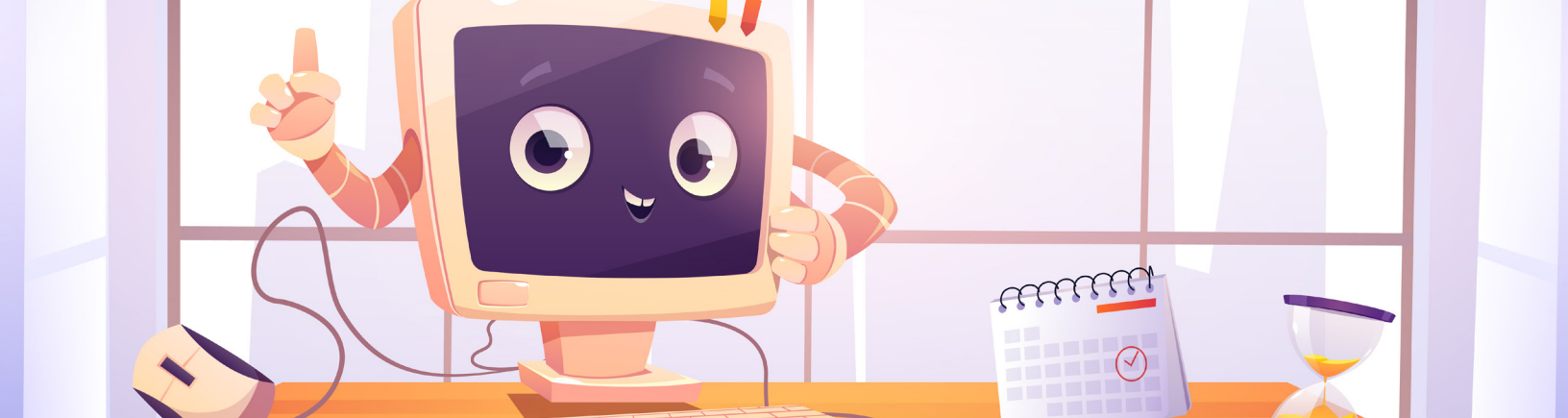
Name: _____

Date: _____

A. Multiple Choice Questions

- How many font styles are available in MS Word?
 - Two
 - Three
 - Four
 - Five
- How many alignment options are available for paragraph in MS Word?
 - Two
 - Three
 - Four
 - Five
- Tools for formatting text are present on which tab of MS Word window?
 - Home
 - Insert
 - Page Layout
 - References





B. Fill in the blanks.

style

Size

Text

1. Font _____ means height and width of a character in text.
2. Font _____ means type of style in which a text appears in a document.
3. _____ Highlight helps in highlighting a selected text.

C. Write T for True and F for False.

1. You cannot change the appearance of a text in MS Word.
2. You can highlight a text in MS Word.
3. You cannot change text case in MS Word.

☐
☐
☐

D. Match the Columns.

Keyboard shortcuts

- (1) Ctrl + B
- (2) Ctrl + I
- (3) Ctrl + U
- (4) Ctrl + C
- (5) Ctrl + V

Effects

- (a) Underline
- (b) Copy
- (c) Bold
- (d) Paste
- (e) Italic

Grade: _____

Teacher's signature: _____



4. FORMATTING TEXT IN WORD 2016

Answer Keys

Worksheet 4.1

- | | | |
|--------------|-----------|----------|
| A. (1) Three | (2) Four | (3) Home |
| B. (1) Size | (2) style | (3) Text |
| C. (1) F | (2) T | (3) F |
| D. (1) c | (2) e | (3) a |



4. FORMATTING TEXT IN WORD 2016



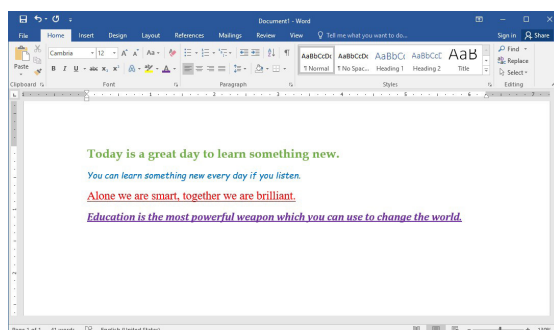
WORKSHEET 4.2

Name: _____

Date: _____

A. Multiple Choice Questions

- Which key needs to be pressed for typing in capital letters?
 - Alt
 - Shift
 - Caps Lock
 - Ctrl
- Which feature in MS Word is used for creating list of texts?
 - Alignment
 - Bullets and Numbering
 - Only numbering
 - Only bullets
- Changing the appearance and arrangement of text is known as:
 - Editing
 - Selecting
 - Formatting
 - Typesetting





B. Fill in the blanks.

Paragraph

Effects

Fill

1. _____ color is used for changing color of a selected area in the document.
2. Shadow and glow can be applied to a text by using Text _____.
3. The option to apply bullets and numbering is available in the _____ group on the Home tab.

C. Write T for True and F for False.

1. You cannot underline a selected text in MS Word.
2. You can change the color of a text in MS Word.
3. Shading button is present in the Paragraph group.

☐☐☐

D. Answer these questions.

1. What do you understand by formatting a Word document?
2. Give any three examples of font types?
3. Write the names of various font styles available in MS Word.
4. What is the keyboard shortcut for increasing font size?
5. You have typed a sentence in Word document. How will you change all the letters in this sentence into capital letters?

Grade: _____

Teacher's signature: _____



4. FORMATTING TEXT IN WORD 2016

Answer Keys

Worksheet 4.2

- A. (1) Caps Lock (2) Bullets and Numbering (3) Formatting
- B. (1) Fill (2) Effects (3) Paragraph
- C. (1) F (3) T (3) T
- D. 1. Changing the appearance of text in a Word document is called formatting.
2. Times New Roman, Arial, Calibri
3. Normal, Bold, Italics and Underlined
4. Ctrl + >
5. After selecting the sentence, go to the Home Tab. Select Change Case to open a dropdown menu. The third option shows UPPERCASE. Click on this option.



5. INTRODUCTION TO PAINT 3D

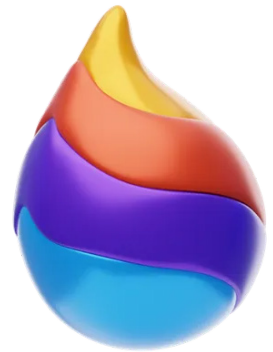
WORKSHEET 5.1

Name: _____

Date: _____

A. Multiple Choice Questions

- Paint 3D is the new version of which program?
 - MS Paint
 - Photoshop
 - Corel Draw
 - GIMP
- Toolbar is present in which part of Paint 3D window?
 - Top
 - Bottom
 - Left pane
 - Right pane
- Which type of shapes can be drawn with Paint 3D?
 - 2D
 - 3D
 - Both a and b
 - None of the above





B. Fill in the blanks.

2D

Microsoft

3D

1. Paint 3D is developed by _____.
2. Circle, triangle and rectangle are examples of _____ shape.
3. Cube and cuboid are examples of _____ shape.

C. Write T for True and F for False.

1. You cannot draw 2D shapes in Paint 3D.
2. You can rotate an object in Paint 3D.
3. Left to right rotation is possible by x-axis rotation handle.

☐
☐
☐

D. Match the Columns.

Column A

(1)



(2)



(3)



(4)



(5)



(6)



Column B

(a) Eraser

(b) Crayon

(c) Oil brush

(d) Fill

(e) Watercolor

(f) Airbrush

Grade: _____

Teacher's signature: _____



5. INTRODUCTION TO PAINT 3D

Answer Keys

Worksheet 5.1

- | | | | |
|----|---------------|---------|------------------|
| A. | (1) MS Paint | (2) Top | (3) Both a and b |
| B. | (1) Microsoft | (2) 2D | (3) 3D |
| C. | (1) F | (2) T | (3) T |
| D. | (1) c | (2) e | (3) a |
| | (4) b | (5) f | (6) d |



5. INTRODUCTION TO PAINT 3D

WORKSHEET 5.2

Name: _____

Date: _____

A. Multiple Choice Questions

- How many handles are present in grab points around a 3D shape in Paint 3D?
 - One
 - Two
 - Three
 - Four
- How many brush options are available in Paint 3D?
 - 4
 - 5
 - 10
 - 20
- Which of the following tools will you use to draw a ball in Paint 3D?
 - Sphere
 - Circle
 - Cylinder
 - Triangle



Paint 3D



B. Fill in the blanks.

Fill

Grab

thickness

1. You can change thickness of a line by dragging _____ slider in Paint 3D.
2. _____ points on the bounding box are used for resizing an object.
3. The _____ button brush option is used to color an object.

C. Write T for True and F for False.

1. Top to bottom rotation is possible by z-axis rotation handle.
2. Eight out of ten brush options are for making drawings.
3. You cannot change the size of 3D/2D shape.

☐☐☐

D. Answer these questions.

1. What is Paint 3D?
2. What is the difference between MS Paint and Paint 3D?
3. Which are the main components of Paint 3D?
4. Which are the four handles on grab points in Paint 3D, and what are their purposes?

Grade: _____

Teacher's signature: _____



5. INTRODUCTION TO PAINT 3D

Answer Keys

Worksheet 5.2

- A. (1) Four (2) 10 (3) Cylinder
- B. (1) thickness (2) Grab (3) Fill
- C. (1) F (2) T (3) T
- D. 1. Paint 3D is a drawing program which is used for drawing 3D shapes.
2. Only 2D shapes could be drawn with MS Paint, while both 2D and 3D shapes can be drawn with Paint 3D.
3. Following are the main components of Paint 3D:
- Menu
 - Tool category area
 - Drawing area or canvas
4. Following are the four handles on grab points in Paint 3D:
- **x-axis rotation:** This handle is used for rotating a drawing from left to right, and from right to left.
 - **y-axis rotation:** This handle is used for rotating a drawing from top to bottom, and from bottom to top.
 - **z-axis rotation:** This handle is used for rotating a drawing from front to back, and from back to front.
 - **z-axis position:** This handle is used for moving the object backward and forward, i.e. near and far.



6. INTRODUCTION TO SCRATCH 3.0

WORKSHEET 6.1

Name: _____

Date: _____

A. Multiple Choice Questions

1. Scratch is developed by which of these institutions?

(a) Harvard

(b) MIT

(c) IIT

(d) NIIT



2. Scratch helps in learning which of the following?

(a) Drawing

(b) Writing stories

(c) Creating music

(d) Programming

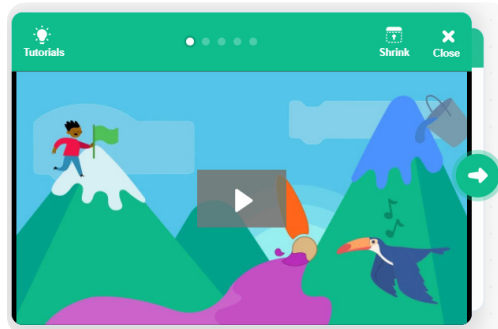
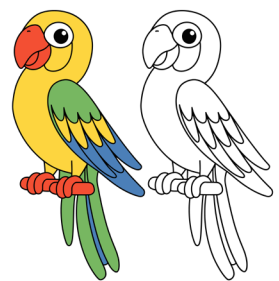
3. Objects are known by which name in Scratch?

(a) Blocks

(b) Sprites

(c) Objects

(d) Lego Blocks





B. Fill in the blanks.

stopping

starting

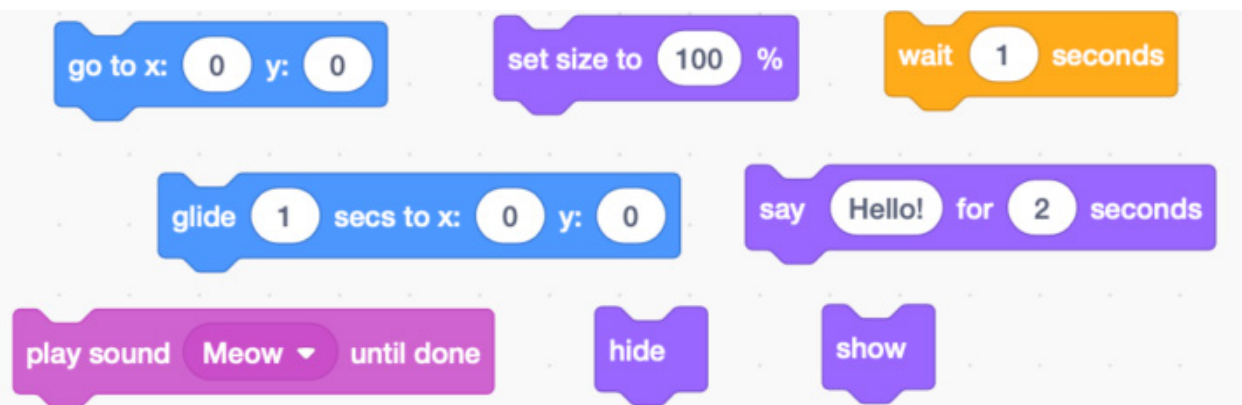
Looks

1. Green flag is used for _____ a project in Scratch.
2. Red button is used for _____ a project in Scratch.
3. _____ block is used for let a sprite say something such as Hello.

C. Write T for True and F for False.

1. Scratch is free to use. ☐
2. Looks block helps in changing the looks of a sprite. ☐
3. Motion block helps in changing the size of a sprite. ☐

D. Following picture shows various components of a project in Scratch. Find out and write the numbers of motion block, looks block and sound block in this project.



Grade: _____

Teacher's signature: _____



6. INTRODUCTION TO SCRATCH 3.0

Answer Keys

Worksheet 6.1

- | | | | |
|----|-----------------------|-----------------|-------------|
| A. | (1) MIT | (2) Programming | (3) Sprites |
| B. | (1) starting | (2) stopping | (3) Looks |
| C. | (1) T | (2) T | (3) F |
| D. | Motion block (blue): | 2 | |
| | Looks block (Purple): | 4 | |
| | Sound block (Pink): | 1 | |



6. INTRODUCTION TO SCRATCH 3.0

WORKSHEET 6.2

Name: _____

Date: _____

A. Multiple Choice Questions

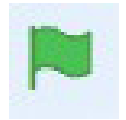
1. Which flag is used for executing a project in Scratch?

(a) Green flag

(b) Red flag

(c) Blue flag

(d) White flag



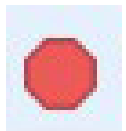
2. Which button is clicked to stop a running project in Scratch?

(a) Black button

(b) Red button

(c) Green button

(d) Blue button



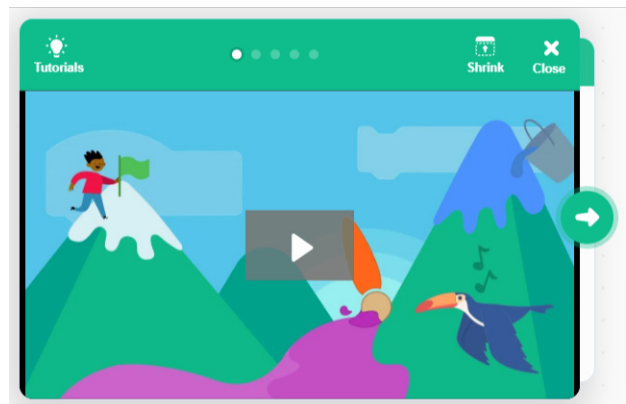
3. Which part of the Scratch window shows the thumbnails of the sprites used in the project?

(a) Stage

(b) Scripts area

(c) Sprites area

(d) Home area





B. Fill in the blanks.

.sb3

Motion

Programming

1. _____ block is used for making a sprite move.
2. Scratch is a _____ software.
3. A Scratch 3.0 project is saved with _____ extension.



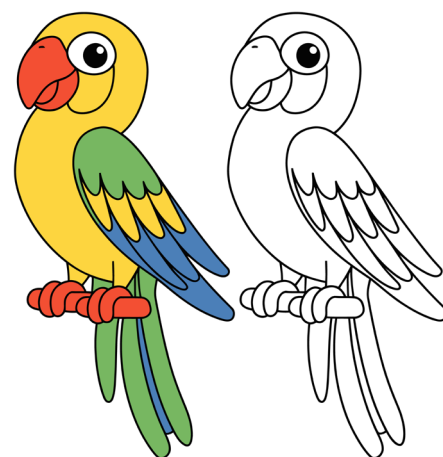
C. Write T for True and F for False.

1. A sprite represents a task.
2. Scratch is developed by an educational institution in the USA.
3. We cannot change the appearance of the sprite with the help of blocks in the Motion Blocks category.

☐
☐
☐

D. Answer these questions.

1. What do you understand by Scratch?
2. What are the uses of Looks block in Scratch?
3. What are the uses of Motion block in Scratch?
4. What is a sprite in Scratch?
5. What is a block in Scratch?



Grade: _____

Teacher's signature: _____



6. INTRODUCTION TO SCRATCH 3.0

Answer Keys

Worksheet 6.2

- A. (1) Green flag (2) Red button (3) Sprites area
- B. (1) Motion (2) Programming (3) .sb3
- C. (1) F (2) T (3) T
- D. 1. Scratch is a simple programming language specifically used for educational purposes. It lets you create your own interactive stories, animations, games, music and art.
2. The blocks of Looks category help you to edit the look of sprite by changing its color or size. You can also make the sprite say something using these blocks.
3. The Motion block is used to give motion to sprites.
4. Objects that perform actions in the scratch project are called sprites.
5. A graphical piece of code representing a task is called a block.





7. MORE ON SCRATCH

WORKSHEET 7.1

Name: _____

Date: _____

A. Multiple Choice Questions

1. Which of the following options allows you to select a sprite from those available in Scratch?



2. For creating motion in a sprite; which block will be chosen first while making a project?

(a) Motion block

(b) Looks block

(c) Control block

(d) Any of the above

3. Which of the following options allows you to draw a new backdrop?





B. Fill in the blanks.

Motion

Control

Looks

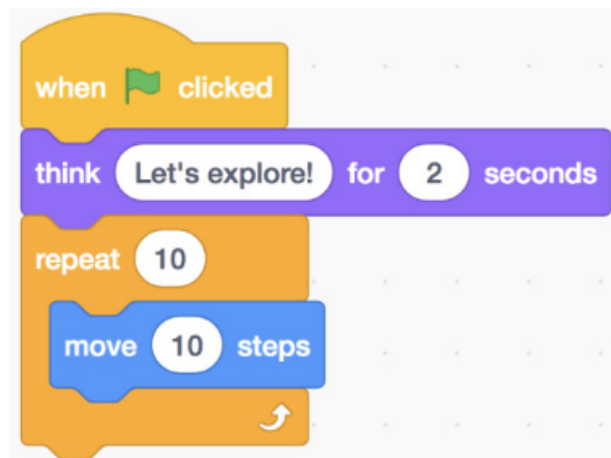
1. _____ block is of orange color.
2. _____ block is of blue color.
3. _____ block is of purple color.

C. Write T for True and F for False.

1. Figure of a cat is an example of a block in Scratch.
2. Figure of a human is an example of a sprite in Scratch.
3. For any project in Scratch; control block is the last to be used.

☐
☐
☐

D. This figure shows a block of codes in Scratch.



What will the program do when clicked? Write different steps in sequence.

Grade: _____

Teacher's signature: _____

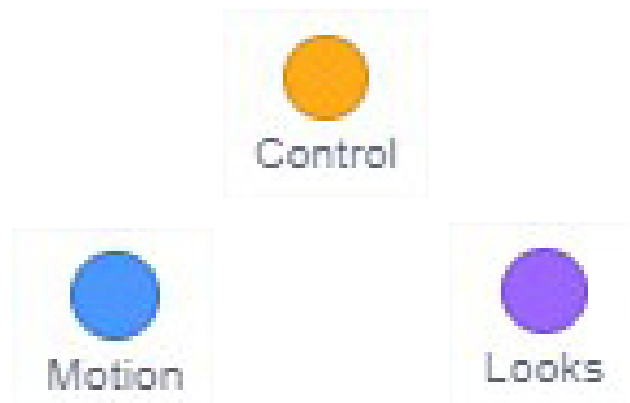


7. MORE ON SCRATCH

Answer Keys

Worksheet 7.1

- | | | |
|-------------------|------------------|-----------|
| A. (1) a | (2) Motion block | (3) b |
| B. (1) Control | (2) Motion | (3) Looks |
| C. (1) F | (2) T | (3) F |
| D. Do it yourself | | |





7. MORE ON SCRATCH

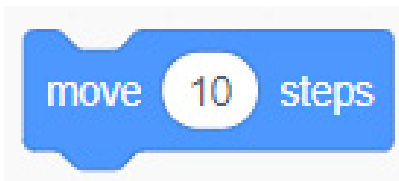
WORKSHEET 7.2

Name: _____

Date: _____

A. Multiple Choice Questions

1. A sprite performs its action in which area?
 - (a) Stage
 - (b) Animation
 - (c) Backdrop
 - (d) Action
2. Following figure shows a motion block.



This will move a sprite in which way?

- (a) 10 steps left
 - (b) 10 steps right
 - (c) 10 steps up
 - (d) 10 steps down
3. By default, the sprite is located in which part of stage?
 - (a) Centre
 - (b) Top-right corner
 - (c) Bottom-left corner
 - (d) None of these



B. Fill in the blanks.

Backdrop

Stage

Script

1. Blocks in Scratch are placed in the _____ area.
2. A sprite is placed in the _____ area.
3. The background that you see on the stage is called a _____.

C. Write T for True and F for False.

1. For increasing the size of a sprite, you need to use Looks block. ☐
2. For rotating an object by 90 degree clockwise, you need to use Looks block. ☐
3. The option to change the sprite is present in the Sprites area. ☐
4. Only one sprite can be added to a project. ☐

D. Answer these questions.

1. Write the steps for creating a new project in Scratch.
2. How will you upload a sprite from files saved on your computer?
3. How will you draw a new sprite in Scratch?
4. How will you remove a sprite from stage?
5. List four methods of creating a backdrop in Scratch.

Grade: _____

Teacher's signature: _____



7. MORE ON SCRATCH

Answer Keys

Worksheet 7.2

- A. (1) Stage (2) 10 steps right (3) Centre
- B. (1) Script (2) Stage (3) Backdrop
- C. (1) T (2) F (3) T (4) F
- D. 1. Follow these steps for creating a new project in Scratch:
- Click on File on the menu bar.
 - Select the New option.
2. Follow these steps for uploading a new sprite in Scratch:
- Place mouse pointer over Choose a Sprite button. It will show four options in sprite area.
 - Select Upload Sprite to upload a file from computer.
3. Follow these steps to draw a new sprite:
- Place mouse pointer over Choose a Sprite button.
 - Select Paint icon and draw a sprite.
 - Apply desired color to the sprite.
 - Move the sprite to desired location by dragging.
4. Steps to remove a sprite:
- Select sprite by clicking on it, then follow any of the following steps.
 - Click on the icon of garbage bin on top right corner of selected sprite.
 - Right click
 - Click on Delete shown in dropdown menu.
5. Four methods of creating a backdrop in Scratch are as follows:
- Choose a backdrop
 - Paint
 - Surprise
 - Upload a backdrop



8. GETTING STARTED WITH THE INTERNET

WORKSHEET 8.1

Name: _____

Date: _____

A. Multiple Choice Questions

1. Internet is the worldwide connection of which of the following?

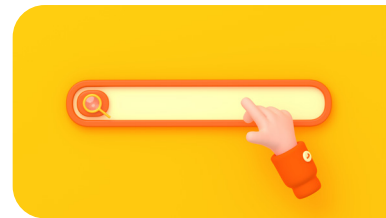
- | | |
|---------------|--------------|
| (a) Computers | (b) Webpages |
| (c) Websites | (d) Software |

2. Which of the following is an e-commerce website?

- | | |
|---------------|------------|
| (a) Google | (b) Amazon |
| (c) Microsoft | (d) Adobe |

3. When you open a webpage, which is the first page you land on?

- | | |
|----------------|------------------|
| (a) First page | (b) Webpage |
| (c) Home page | (d) Welcome page |





B. Fill in the blanks.

WWW document world wide web website

1. www stands for _____ .
2. A webpage is an individual _____ available on www.
3. A _____ is a collection of related webpages.
4. _____ is a collection of linked documents or pages, stored on millions of computers across the world.



C. Write T for True and F for False.

1. There is no need for parental guidance while using the internet.
2. Flipkart is an e-commerce website.
3. Mozilla is an Internet Service Provider.
4. A Graphical browser can display all kinds of information present on the web page.

☐
☐
☐
☐

D. Write the full forms of following:

1. ISP
2. www
3. HTML
4. URL



Grade: _____

Teacher's signature: _____



8. GETTING STARTED WITH THE INTERNET

Answer Keys

Worksheet 8.1

- A. (1) computers (2) Amazon (3) Home page
- B. (1) world wide web (2) document (3) website (4) WWW
- C. (1) F (2) T (3) F (4) T
- D. (1) Internet Service Provider
(2) World Wide Web
(3) Hypertext Markup Language
(4) Uniform Resource Locator





8. GETTING STARTED WITH THE INTERNET

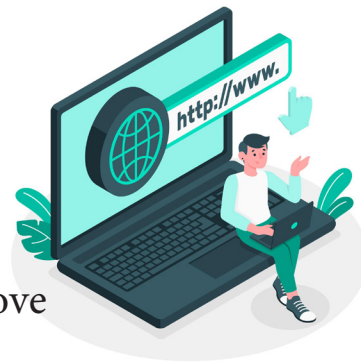
WORKSHEET 8.2

Name: _____

Date: _____

A. Multiple Choice Questions

- Which of the following is an example of web browser?
 - Chrome
 - Firefox
 - Safari
 - All of the above
- BSNL and JIO are examples of which of the following?
 - Internet
 - Webpage
 - ISP
 - HTML
- A hyperlink is usually highlighted:
 - in red and bold
 - in blue and italics
 - in blue and underline
 - in red and underline





B. Fill in the blanks.

dynamic

static

Airtel

1. A _____ web page does not change frequently.
2. A _____ web page frequently changes.
3. _____ is an Internet Service Provider.



C. Write T for True and F for False.

1. Microsoft Edge is a web browser.
2. Everyone needs a web browser to surf the internet.
3. The content on a Dynamic web page keeps on changing.

☐
☐
☐

D. Answer these questions.

1. What do you understand by internet?
2. Write any 3 uses of internet.
3. What is a web browser?
4. What will happen if someone clicks on an unknown link on internet?
5. What is the significance of URL?



Grade: _____

Teacher's signature: _____



8. GETTING STARTED WITH THE INTERNET

Answer Keys

Worksheet 8.2

- A. (1) All of the above (2) ISP (3) in blue and underline
- B. (1) static (2) dynamic (3) Airtel
- C. (1) T (2) T (3) T
- D. 1. A network of computers from all over the world is called internet.
2. Following are 3 uses of internet:
- Online education
 - Online shopping
 - Banking
3. A web browser is a program which enables us to use the internet. We need a web browser to open a webpage or website.
4. Clicking an unknown link can be dangerous. It can take us to a harmful website. It can also steal money from bank accounts.
5. URL stands for uniform resource locator. A URL is a unique address of a document on internet. No two documents can have the same URL. Uniqueness of URL ensures you open the correct page by typing a URL.





9. AI-POWERED DEVICES

WORKSHEET 9.1



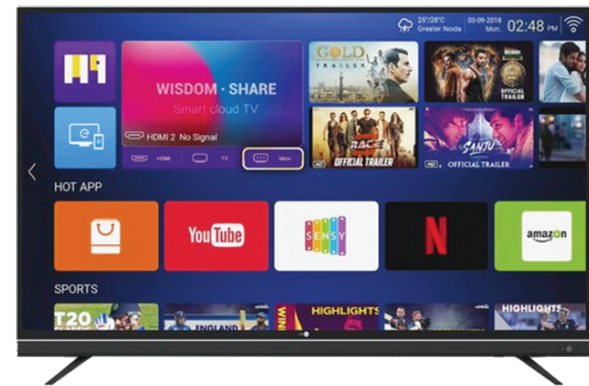
Name: _____

Date: _____

A. Multiple Choice Questions

1. Which of these TVs is connected to internet?

- (a) Flat screen TV
- (b) LCD TV
- (c) Plasma TV
- (d) Smart TV



2. Which of the following is a security gadget?

- | | |
|----------------|-----------------|
| (a) Smart TV | (b) Smart watch |
| (c) Smart lock | (d) Smartphone |

3. Which of the following is now widely used by health conscious people to keep a track of their workouts and exercises?

- | | |
|------------------|-----------------|
| (a) Smart TV | (b) Smart watch |
| (c) Smart camera | (d) Smart lock |





B. Fill in the blanks.

computer

virtual

display

1. _____ assistant in Smart TV helps us to use voice control instead of remote control.
2. A smartphone combines a mobile phone and _____ in one unit.
3. A Smartwatch often has touchscreen _____.



C. Write T for True and F for False.

1. AI has no use for TV.
2. A virtual assistant uses AI.
3. A smartwatch is a combination of mobile phone and watch.

☐
☐
☐

D. Answer these questions.

1. What do you understand by Smart TV?
2. What do you understand by Smartphone?
3. What is a smartwatch? Which type of data can be accessed through this?



Grade: _____

Teacher's signature: _____



9. AI-POWERED DEVICES

Answer Keys



Worksheet 9.1

- A. (1) smart TV (2) smart lock (3) smart watch
- B. (1) virtual (2) computer (3) display
- C. (1) F (2) T (3) F
- D. 1. A smart TV, also called a connected TV (CTV) is a TV set that has the ability to connect to the Internet.
2. A smartphone is a hand-held electronic device that combines the features of a mobile phone and a computer into one unit.
3. A smartwatch is a wearable computing device in the form of a watch. It not only tells time like traditional wrist watches but includes many other features such as monitoring heart rate, providing reminders, counting your steps, etc.





9. AI-POWERED DEVICES

WORKSHEET 9.2



Name: _____

Date: _____

A. Multiple Choice Questions

- Which of these locks can be programmed to open through a Smartphone?
 - Padlock
 - Number lock
 - Smart lock
 - Hi-tech lock
- Smart Teddy Bear is an example of which of the following?
 - Smartphone
 - Smart toy
 - Smart lock
 - Smart camera
- Which of the following devices we can use to make phone calls?
 - Smartphone
 - Smartwatch
 - Smart lock
 - Both (a) and (b)





B. Fill in the blanks.

Digital

security

smartwatch

1. Smartlock is the latest innovation in _____ industry.
2. SAMSUNG Gear is an example of _____.
3. A smart lock is operated using a _____ key.



C. Write T for True and F for False.

1. Amazon's Alex is a brand of smartlock.
2. Smart camera is a security-related gadget.
3. Smart Bike is not traditional Bicycle.

☐
☐
☐

D. Answer these questions.

1. Write a short note on smart lock.
2. What are the benefits of smart cameras?
3. What are the features of a Smart TV?



Grade: _____

Teacher's signature: _____



9. AI-POWERED DEVICES

Answer Keys



Worksheet 9.2

- A. (1) smart lock (2) smart toy (3)
- B. (1) security (2) smartwatch (3) Digital
- C. (1) F (2) T (3) F
- D. 1. Smart lock is a useful innovation in the security industry. It is connected to a smartphone and operated using a digital key. AI technology enables the lock to detect when it is tampered with. Also, we can control access to the digital key so no one can steal or make a copy of it unlike the standard house keys.
2. Smart cameras do more than just recording footage and capturing images. They have additional functions which enable us to keep a check on our home even when we are miles away from there. They are equipped with intelligent image sensors that can detect faces. So we can get alerts whenever it detects some suspicious or unrecognised faces.
3. A Smart TV has many special features that make it different from a normal TV. Some features are:
1. **Internet Access** – A Smart TV can connect to the internet using Wi-Fi.
 2. **Apps Support** – It can run apps like YouTube, Netflix, and games.
 3. **Voice Control** – Some Smart TVs can be controlled using voice commands.
 4. **Screen Mirroring** – You can show your mobile or laptop screen on the TV.
 5. **Streaming Services** – You can watch movies, shows, and videos online.
- Smart TVs make watching TV more fun and exciting!